

www.centersky.cn

全球专业电磁矽钢片制造领导品牌

Centersky Lamination Catalogue

中天电器产品选型手册



中天电器
CENTERSKY

创新
谱写
新篇

By
Hu Jintao
President and General Secretary of CCP
2005/5/19

业绩
新篇章

胡锦涛



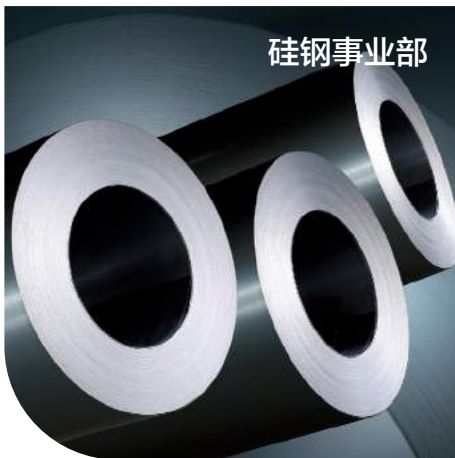
二〇〇五年五月十九日



国际事业部



光电事业部



硅钢事业部



教育事业部

中天集团

CENTERSKY GROUP

中天智投（香港）集团股份有限公司
Centersky Group (HK) Limited

旗下企业



全球专业电磁矽钢片制造领导品牌



全球专业液晶导光板供应商
苹果公司iMac液晶显示器合作伙伴



中天电器数字与光电产品销售中心



无锡地区最大的英语教育培训机构





中天电器
CENTERSKY

—— 全球专业电磁矽钢片制造领导品牌 ——

-SINCE-
1974

您正在寻找高品质的电磁矽钢片产品？

中天电器是全球领先的电抗器，电动机，发电机，变压器用电磁矽钢片产品供应商。

中天电器秉着“精诚所在，致力以专”的企业理念，为您生产能效型，节能型产品。

我们拥有超过40年制造经验，拥有顶级的生产设备和制造团队为全球500强提供优质产品。

Are you looking for the HQ Lamination silicon steel sheet?

Centersky is the silicon steel sheet producer for the worldwide electric reactor, electromotor, electric generator and transformer manufacturers.

Based on the business philosophy of "We offer the most professional silicon steel sheet in the world with highlighting speciality", Centersky is working on the HQ energy-efficient products all the time.

With 40 years manufacturing experience, first-class equipment and professional team, Centersky becomes the important partner of Fortune Global 500 companies.

Contents

目录

10 关于我们

16 我们的优势

19 我们的流程

20 我们的资质

24 我们的产品

14 About us

16 Our Strength

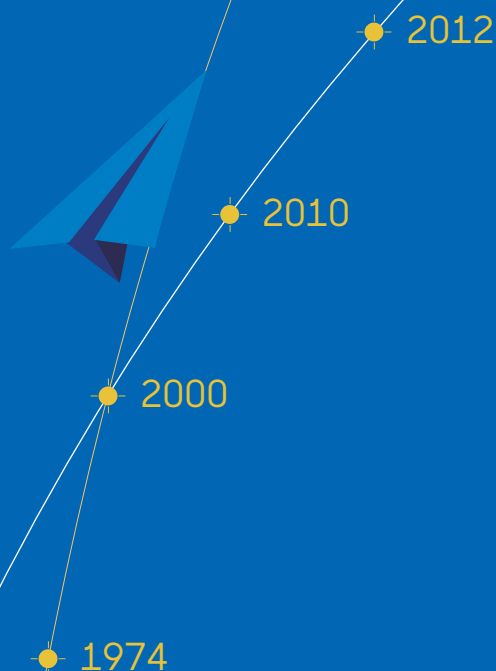
19 Our Process

20 Our Authenticate

24 Product Specifications

Growth Situation

发展历程



创立新业绩 谱写新篇章

- 2012 在香港投资成立中天智投（香港）集团股份有限公司，中天电器首席执行官徐杰先生任董事局主席
- 2010 向上海世界博览会提供技术支持，助威上海世界博览会
中天电器第二次高速发展期，至此，中天电器的电磁产品已占全国份额30%，全球份额11%，世界500强大部分相关行业都在使用中天电器生产的矽钢片产品，中天电器为世界知名的矽钢片生产厂商
投资建立江阴蒙特梭利早教中心
- 2009 引进并投资创立无锡地区最早的全外教英语培训机构-夏恩英语，为企事业，学校，机构培养大量的英语人才
- 2007 投资成立中天贯云光电有限公司，同年成为美国Apple电脑及韩国LG Display显示器指定供应商，出货量占上述两家公司光电产品份额的30%
- 2006 投资成立中天智杰贸易有限公司，全面负责中天电器及旗下产品的海内外推广销售
- 2005/5/19 时任中共中央总书记，国家主席胡锦涛视察中天电器，并题下：创立新业绩，谱写新篇章
- 2005 中天电器三期厂房15000平方米落成
- 2003 中天电器搬迁新厂，以绿色环保理念筹建花园式厂区
- 2000 各分公司产业整合并正式改名为中天电器有限公司
中天电器第一次高速发展期，“中天”牌电磁矽钢片为华东地区占有率最大份额
- 1988 成立化工分厂
- 1979 成立潜水泵分厂
- 1974/7/21 创始人徐宪良先生，创办中天电器前身江阴市南闸中学硅钢片校办厂



徐杰

中天电器首席执行官
中天智投（香港）集团股份有限公司董事局主席

Welcome

徐杰先生

中天电器首席执行官兼中天智投（香港）集团股份有限公司董事局主席

放眼未来，中天电器以日新月异的市场环境为契机，与时俱进，迅速应对各种变化，正从传统的电磁矽钢片制造商向电磁产品全面解决方案进行转变。随着国家开始将经济产业政策转向节能行业，并开始出台一系列政策对此予以支持。我们寻求电磁领域的节能特性，希望通过多年的技术积累来丰富产品线，并能在与绿色环保息息相关的领域不断成长。

为此，我们推进旨在同时实现“强化经营基础”和“建立成长基础”的结构改革，着眼于新商品领域的开拓和成长型市场，努力提高在全球市场的信誉和企业

价值，打造全球知名的电磁行业领导品牌，为实现真正的全球化而不懈奋斗。我们始终将“精诚所在，致力以专”的中天精神铭记于心，全体员工团结一致，向前迈进，同时主动承担社会责任，成为社会真正需要的企业。



中天电器建厂以来便建立花园式厂区，以重视环境保护作为企业不断发展的基础。

About us

中天电器作为一个家族企业创始，发展至今已然成为行业龙头企业。我们珍惜每一个客户。我们知道如何以最佳方式创新产品，以高效节能产品满足您的需求。

中天电器有限公司是全球专业电磁矽钢片制造业领导者，专业生产各种标准及非标系列EI矽钢片、三相铁芯、镇流器铁芯，TL系列和各种规格剪片等产品，广泛用于电子变压器、电力变压器、互感器、感测器、稳压调压器、电脑电源、漏电保护开关、电焊机、磁放大器及仪器仪表等行业。

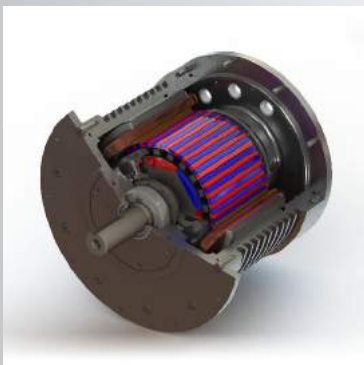
中天电器电磁矽钢片制造领域已有超过四十年的悠久历史，为业界最专业电磁矽钢片制造商。目前公司建

筑面积近15000平方米，员工200余人，质量品控人员30余人，为全球（包括世界500强）的变压器企业提供各类优质电磁矽钢片。中天电器以卓越的品质，诚挚的服务得到的广大客户的认可。

中天电器秉承“精诚所在，致力以专”的企业理念，不断攻克技术难关，不断提高产品质量，不断研发新产品。

What we do

中天电器为电抗器，发动机，发电机，变压器和精密电磁电器行业的领先制造商，我们为客户提供材料采购，金相分析，工程设计，原型设计，产品设计，加工和增值服务。



电动机/发电机

我们生产的电机转子，从小型的手持电动剃须刀动力马达到巨大的风力发电机转子。

我们拥有世界上最先进的大型冲压设备，和一流的制造团队，可以处理任何生产要求。此外我们还提供专业级测试和优化服务，定会为您的产品提升更加卓越的性能。



电磁矽钢片

我们的工程师为根据客户的效率需求，推荐最有效最具性价比的材料，从而达到产品所需的行业标准。

我们拥有大型的仓储设施，大量的库存完全可以抵御原材料涨价的风险。

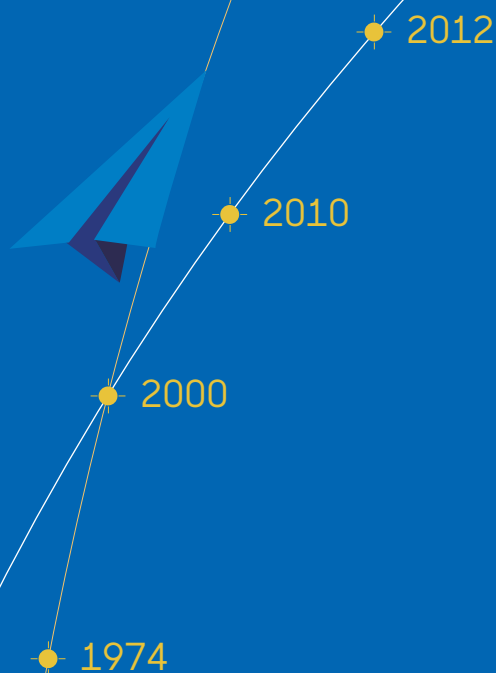


模具

中天电器拥有专业级的模具设计师和模具制造团队，我们为全球500强企业提供电磁产品制造所需的高精度模具，尤其在客户开发新产品的设计阶段，我们的模具设计师可以在制造精度和公差方面给您提供有效的建议和支持服务。

Growth Situation

发展历程



Harvesting Greater Achievements Composing New Chapters

- 2012 Established Centersky Group (HK) Limited in Hongkong; Mr. Jag Xu, CEO of Centersky Electric Appliance, is the Chairman of the Board of Directors.
- 2010 Provided technical assistance and cheered for Shanghai World Expo;
- It was the second high speed development period of Centersky Electric Appliance Co., Ltd. So far, the electro-magnetic products made by Centersky took the share of 30% in China and 1.1% in the global market. As a world known silicon steel manufacturer, nearly half of the world's top 500 enterprises purchased our products.
- Established Montessori (Jiangyin) Baby School
- 2009 Introduced and established Shane English school-- the earliest English training institution, which trained a number of English talents for enterprises, institutions and schools.
- 2007 Established Centersky GuanYun Photoelectric Technology Limited, which became the designated display provider for American Apple computer and Korean LG and our shipments took 30% share of the two companies.
- 2006 Established Centersky ZhiJie Trade Limited, which was in charge of the product promotion at home and abroad.
- 2005/5/19 Hu Jintao, President and General Secretary of CCP, visited Centersky and wrote an inscription: Harvesting Greater Achievements, Composing New Chapters
- 2005 Completed the third phase of factory building of 15000 square meters;
- 2003 Moved to a new factory—a green environmentally friendly garden factory
- 2000 All branches integrated into a corporation named Centersky Electric Appliance Co., Ltd
- It was the first high speed development period of Centersky. "Centersky" electromagnetic silicon steel took the lion's share in East China.
- 1988 Established a chemical branch
- 1979 Established a submersible pump plant
- 1974/7/21 Mr. Xu Xianliang, the Founder, established a school-run silicon steel factory affiliated to Nanzha Middle School, Jiangyin, the parent of Centersky Electric Appliance Co., Ltd.



徐杰

Centersky Electric CEO
Centersky Group (HK) Limited Chairman of the Board

Mr. Jag Xu

Centersky Electric CEO

Centersky Group (HK) Limited Chairman of the Board

Centersky is focusing its gaze far out in the future and has set a goal of becoming the comprehensive solution provider on electromagnetic products. We attach importance to develop the energy-efficient products and expand the worldwide market relevant to the environmental protection.

We do believe that good products and services are the credibility and value of the company. Based on the business philosophy of " We offer the most professional silicon steel sheet in the world with highlighting speciality" , Centersky is

working on the HQ energy-efficient products and services all the time. There has been a call for companies to do more in society increasingly. As the leading company in the electromagnetic field, Centersky is undertaking more and more social responsibilities and set a example for other companies.



Centersky pays special attention on the environmental protection and constructs the modern and garden-style plant building.

Centersky is a family company, owned by the same family since it was founded back in 1974. As the industry leader, Centersky treasures every customer, improves each innovation and devotes itself to satisfy the demand of energy-efficient.

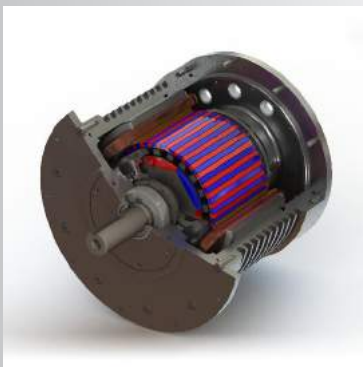
Centersky is a global professional electromagnetic silicon steel manufacturing leader, specialized in the production of a variety of standard and non-standard series EI lamination, three-phase core, core ballasts, TL core series and a variety of reactor core products, widely for electronic transformers, power transformers, sensors, voltage regulator, computer power, leakage protection switch, welding machine, magnetic amplifiers, reactor, and instrumentation industries.

As the most professional manufacturer of

magnetic laminations, Centersky has more than 40 years of professional experience. The floor area of the company is nearly 15,000 square meters. There are about 30 quality monitoring people among 200 employees. Centersky Provides high quality products to the customers worldwide (including Fortune 500). The excellent quality and sincere service we offered are recognized by our customers .

What we do

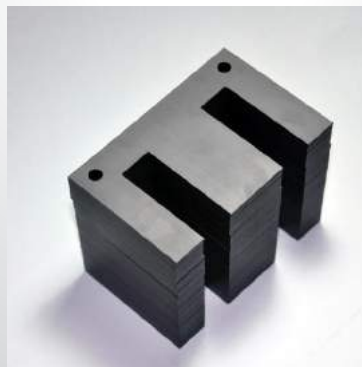
Centersky offers Raw-material Purchase , Metallographic analysis, Engineering Design , Prototype Design , Production Design, Production and value-added service.



Motor/Generator

There are a wide range of Motor rotors produced by Centersky.

Optimization Plans can also be offered to improve performance .



Transformer

Right raw material will be suggested according to the customer demand.

A large number of storage facilities and inventory ensure the price stability.



Die manufacturing

Die Desinger can provide effective suggestions and back up services on the drawing board.



严格的选材，详尽的产品分级制度，确保客户获得产品的高度一致
庞大的客户个性化要求定制库，确保每个客户都能获得最合适他们的产品

Integrate and production

中天电器通过金蝶K/3-WISE，控制制造过程实现资本的升值，使原材料转变为产品。我们大规模的应用先进工艺实现产销一体化，节约成本，提升产品的竞价机制。

Centersky Electric Appliance Co. Ltd utilizes K/3-WISE to monitor the manufacturing process and converts raw materials into products to bring about the asset appreciation. We employ the advanced technology on a large scale to realize the integration of production and marketing, save costs and promote the bidding mechanism.

中天电器通过构筑基于金蝶K/3-WISE软件平台的信息化整体解决方案，打通了产、销、研的三流共享，实现以技术进步为先导的产销一体化管理。

中天电器也成为中国国内最早在金蝶K/3-WISE系统平台上，成功实施从基础自动化(一级)、过程控制系统(二级)、制造执行系统(三级)到专业化管理(四级)全面集成的电工钢加工企业。

系统的四级架构，集成了一级系统到四级系统所有的信息，实时监控生产变动，体现了一体化的流程式企业管理思想，使企业管理水平得以提升。

各级实时交互的信息流、物流得以在该系统中统一反映，缩短了产品生产周期，建立起了快速迅捷的市场反应机制。

Based on the Kingdee K/3-WISE software platform, Centersky established shared data systems of production, sales and research, further to realize the integration of production and marketing management. The implementation of the basic automation system (level 1), the process control system (level 2), the manufacturing execution system (level 3) and the professional management (level 4) make Centersky become one of the earliest fully integrated electrical steel processing enterprises. The integration of all the information helps to monitor real-time change in production process and reflects the integration of business management thought, which enhance the level of business management. All levels of real-time interactive information flow and logistics data can be reflected in the system, which shorten the production cycle of the product and establish a mechanism of quick market response.

Kingdee 金蝶



Every customer can get the fitting production because we have the strict material selection & classificatoin system and personalized services.



5000+
STOCK

245+
CUSTOMER

15000+
SALES



提供定制的增值服务，以提高客户的生产效率，甚至减少客户工序
优秀的电气工程师团队，配合客户共同研发产品，以达到性能成本最佳比例

Our approach

Centersky offers the customized value-added services to enhance the efficiency and reduce the production process of customers. Centersky helps the customer develop products together and collaborate effectively.

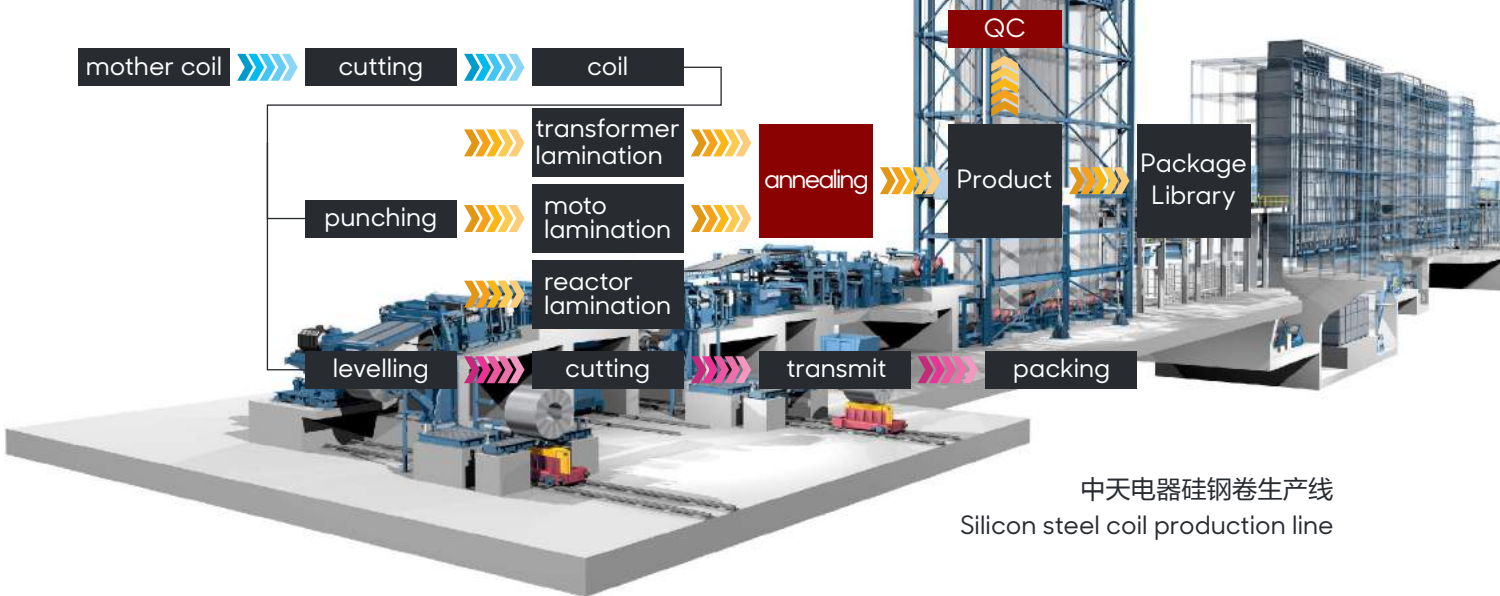
借鉴40年的电工钢制造经验，中天电器在电磁材料性能研发领域具有很强的竞争力。Centersky is working on reducing the iron loss to improve the performance of the production. Double Annealing has been widely used in Centersky after numerous tests of R&D team.

中天电器采用二次退火工艺发挥无取向电工钢材料的性能，进一步降低产品的铁损。研究表明：传统工艺流程生产的50W800产品在710~790℃范围内若不进行二次退火，虽然铁损下降最快，但是磁感变化不明显；二次退火后的产品晶粒粗大且均匀，有利织构组分 $\{100\}$ 和 α 纤维织构组分的增加，有利于磁性能进一步的提高。

合理的二次退火工艺能进一步改善电工钢成品磁性能通过低温消除应力和较高温度下铁素体晶粒长大和均匀化程度提高的共同作用促使铁损降低。

Secondary annealing created by Centersky improves the performance of non-oriented electrical steel, and further reduce the iron loss of the products. The findings suggest that: if we use the secondary annealing at the temperature of 710 ~ 790 °C on the traditional production of 50W800, the iron loss decline fastest and the magnetic induction does not change significantly. The grain of the products after secondary annealing is coarse and even, which help to increase texture components $\{100\}$ and α fiber texture components and further improve the magnetic properties.

Manufacturing Process



中天电器硅钢卷生产线
Silicon steel coil production line

CRH



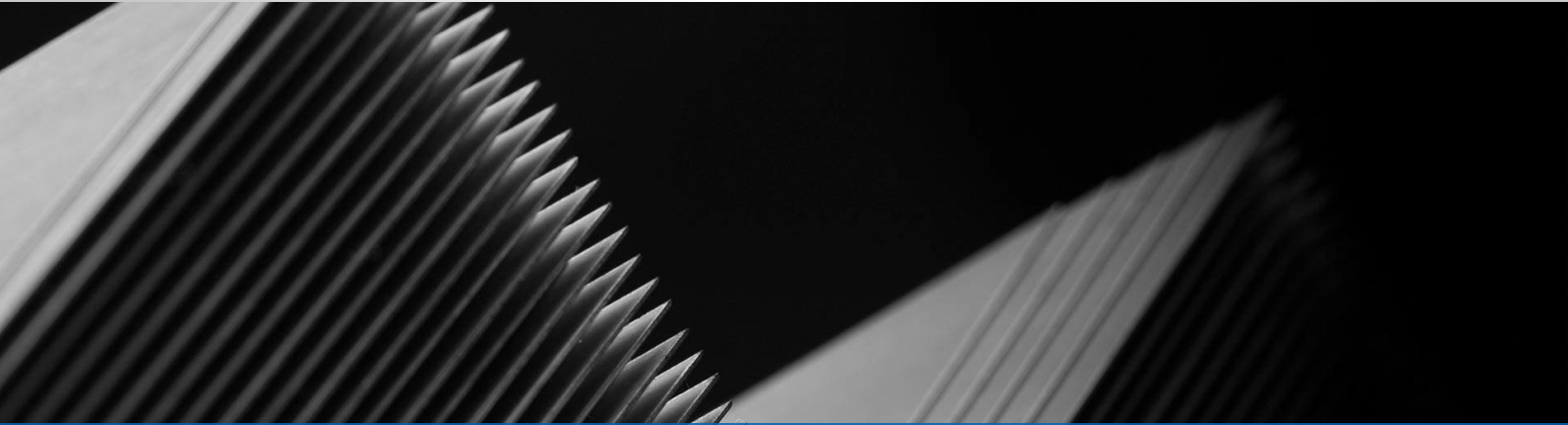
ONVOR





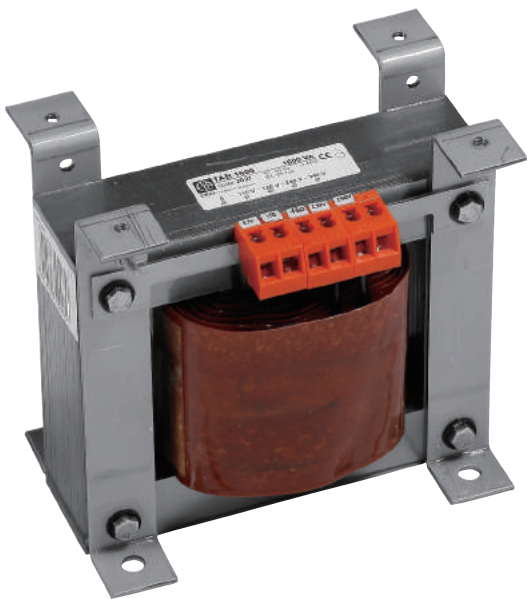


EI Core Lamination



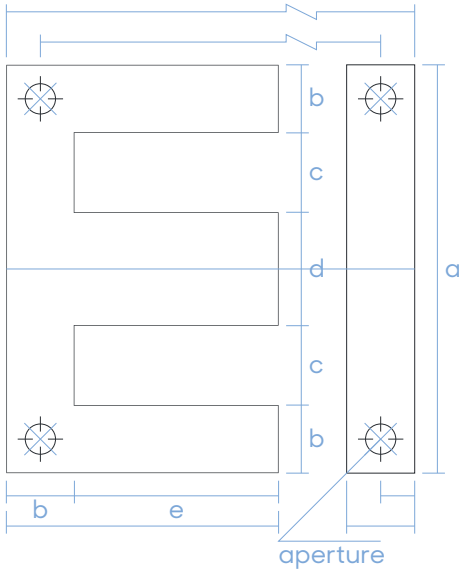
适用范围：适用于电源变压器、镇流器、UPS、充电器、控制变压器等。

Scope: Power Transformer, Ballast Resistor, UPS, Charger, Control Transformer





EI 型矽钢片规格表 EI Core Lamination Table



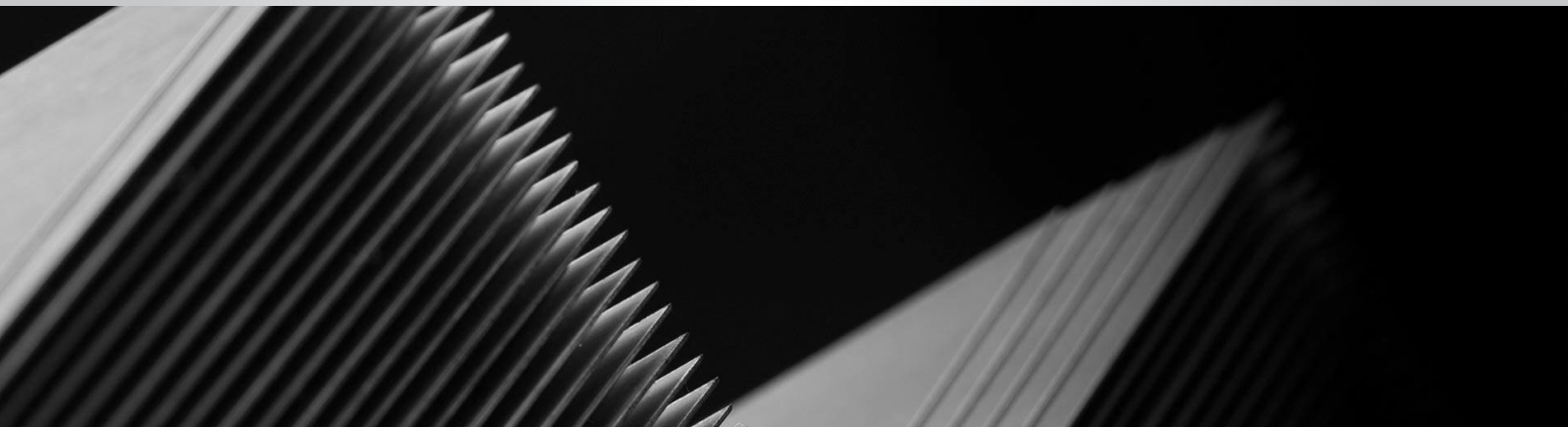
TYPE	a	b	c	d	e	holes	aperture
E12	44	8	8	12	22		
E14-S	42	7	7	14	21		
E14-L	50	9	9	14	25		
E16-S	56	10	10	16	28		
E19-L	67	12	12	19	33.5		
E20	60	10	10	20	30.5		
E22-L	78	14	14	22	39	4	5
E25	75	12.5	12.5	25	37.5	4	5
E26-L	94	17	17	26	47	4	6
E30-S	90	15	15	30	45	4	6
E30-L	106	19	19	30	53	4	6
E34	146	20	36	32		4	6.5
E35-L	123	22	22	35	61.5	4	6
E38-L	118	20	20	38	59	4	6
E40-L	144	26	26	40	72	4	6
E44	132	22	22	44	66	4	6
E46	166	30	30	46	83	4	6
E50-L	154	25	27	50	77	4	8
E54	162	27	27	54	81	4	8
E56	168	28	28	56	84	4	8
E56-L	182	30	30	56	91	4	8
E57	171	28.5	28.5	57	85.8	4	10
E70-S	210	35	35	70	105	4	10
E70-L	222	38	38	70	111	4	10
E74	222	37	37	74	111	4	10
E76	228	38	38	76	114	4	10
E80-S	240	40	40	80	120	4	10
E80-L	288	52	52	80	144	4	12
E80	260	40	50	80	140	4	
E90	270	45	45	90	135	4	12
E100	300	50	50	100	150	4	12
E120	360	60	60	120	180	4	12

Note:

1. 标有"*"的型号是通过手动冲床制造的
1. Marked "*" model is manufactured by manually punch

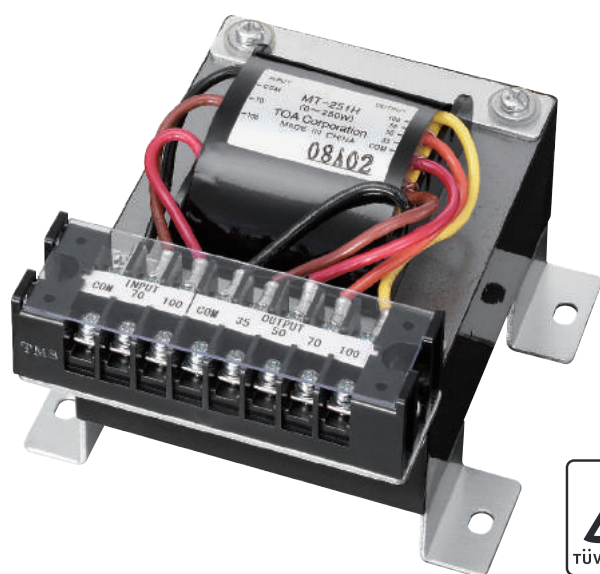
High-Speed Punch

EI Core Lamination



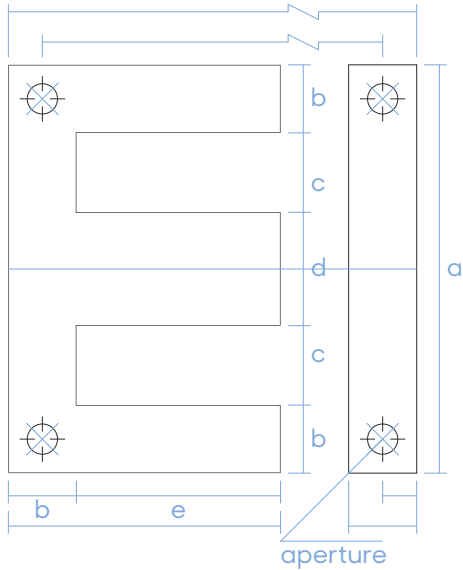
适用范围：适用于电源变压器、镇流器、UPS、手机充电器等。

Scope: Power Transformer; Ballast Resistor, UPS, Phone Charger





EI 型高速冲矽钢片规格表 EI Core high-speed punch Lamination Table



TYPE	a	b	c	d	e	holes	aperture
EI-28	28	4	6	8	17		
EI-35	35	5	7.5	10	19.5		
EI-41	41	6	8	13	21		
EI-42	42	7	7	7	14		
EI-48	48	8	8	16	24		
EI-50	50	8	9	16	25.5		
EI-57	57	9.5	9.5	19	28.5	4	4
EI-60	60	10	10	20	30	4	5
EI-66	66	11	11	22	33	4	4
EI-76.2	76.2	12.7	12.7	25.4	38.1	4	5
EI-78	78	13	13	26	39	4	5
EI-84	84	14	14	28	41	4	6
EI-85.8	85.8	14.3	14.3	28.6	42.9	4	5
EI-96	96	16	16	32	48	4	6
EI-105	105	17.5	17.5	35	52.5	4	6
EI-108	108	18	18	36	54	4	5.5
EI-114	114	19	19	38	57	4	6
EI-120	120	20	20	40	60	4	7
EI-133.2	133.2	22.2	22.2	44.4	66.6	4	7
EI-150	150	25	25	50	75	4	8
EI-152.4	152.4	25.4	25.4	50.8	76.2	4	8
EI-162	162	27	27	54	81	4	10
EI-168	168	28	28	50	84	4	10
EI-171	171	28.5	28.5	57	85.5	4	10
EI-180	180	30	30	60	90	4	10
EI-192	192	32	32	64	96	4	10
EI-270	270	45	45	90	135	4	12
EI-228	228	38	38	76	114	4	10
EI-300	300	50	50	100	150	4	12
EI-360	360	60	60	120	180	4	12
EI-240	240	40	40	80	120	4	10
EI-210	210	35	35	70	105	4	10

EI 型高速冲谐波电流抑制器矽钢片规格 EI sheet specifications

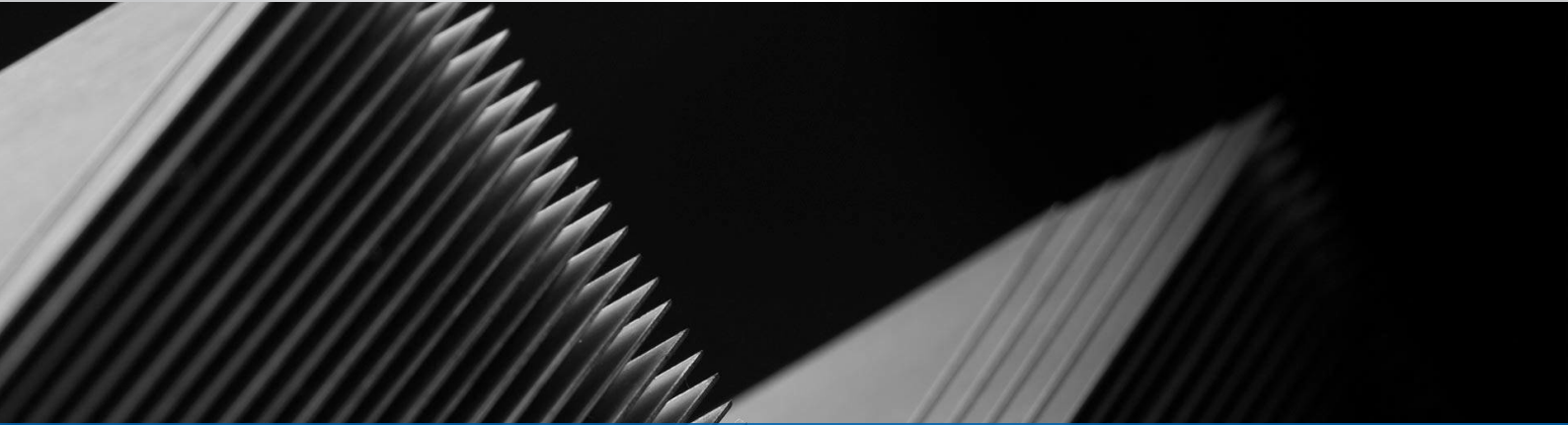
TYPE
EE-41
EE-48

Note:

1. 标有"*"的型号是通过手动冲床制造

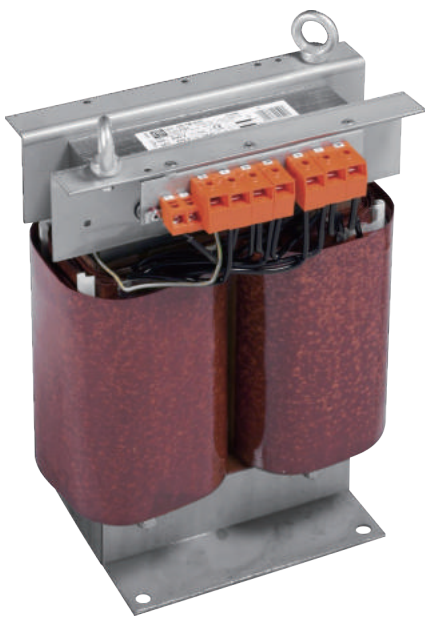
1. Marked "*" model is manufactured by manually punch

UI Core Lamination



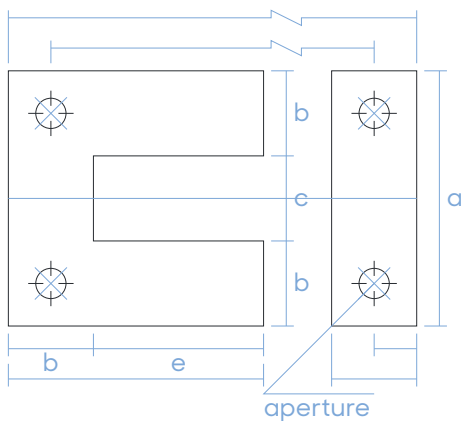
适用范围：适用于双线包电源变压器等。

Scope: Double Coil Coating Power Transformer





UI 型矽钢片规格表 UI Core Lamination Table



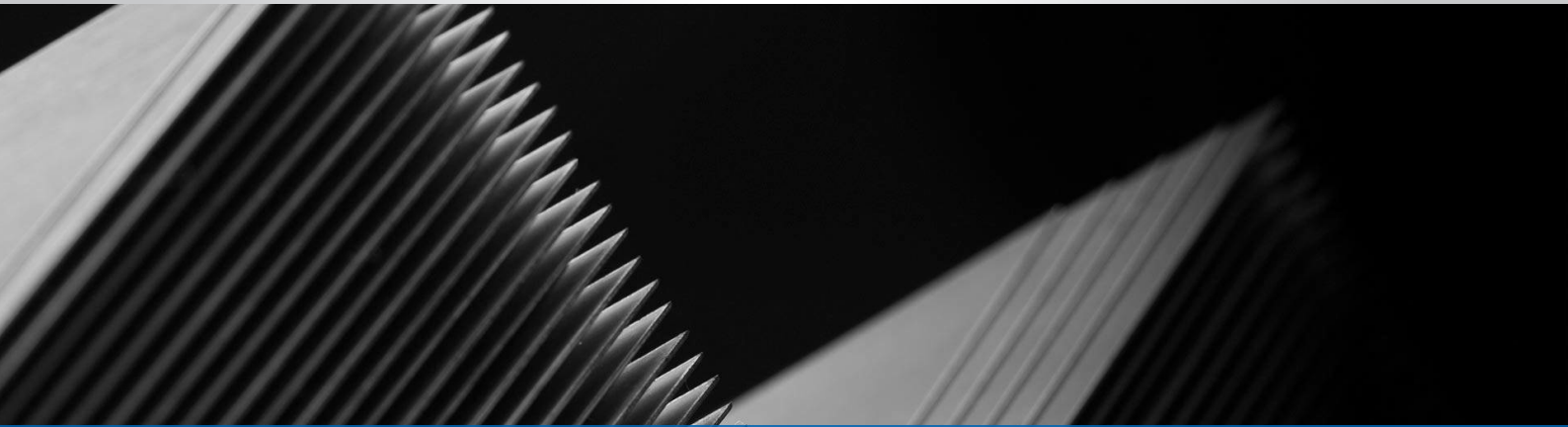
TYPE	a	b	c	d	e	holes	aperture
UI20	60	20	20		60	4	6
UI22	66	22	22		66	4	6
UI25	75	25	25		75	4	6
UI27	81	27	27		81	4	6
UI28	84	28	28		84	4	8
UI30	90	30	30		90	4	8
UI32	96	32	32		96	4	8
UI35	105	35	35		105	4	8
UI38	114	38	38		114	4	8
UI40	120	40	40		120	4	10
UI44	132	44	44		132	4	10
UI45	135	45	45		135	4	10
UI50	150	50	50		150	4	10
UI60	180	60	60		180	4	10
UI70	210	70	70		210	4	13
UI80	240	80	80		240	4	14
UI90	270	90	90		270	4	14
UI100	300	100	100		300	4	16

Note:

1. 标有"*"的型号是通过手动冲床制造的

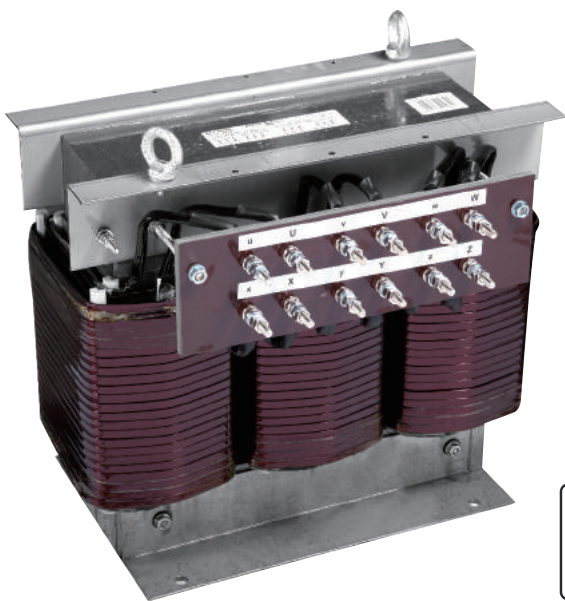
1. Marked "*" model is manufactured by manually punch

Three-Phase EI Core Lamination



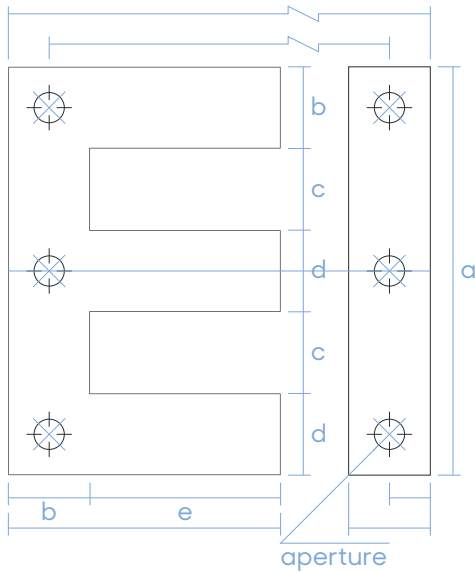
适用范围：适用于工程类变压器和大功率电压交换变压器等。

Scope: Engineering Transformer and High-power Transformer in AC voltage mode





EI 型三相矽钢片规格表 EI Core Three-Phase Lamination Table



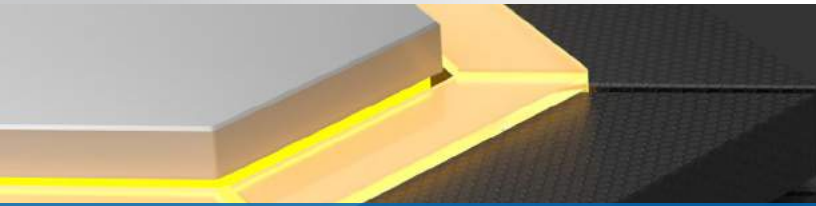
TYPE	a	b	c	d	e	holes	aperture
3PEI-17.5	87.5	17.5	17.5	17.5	52.5	4	6
3PEI-20	100	20	20	20	50	6	6
3PEI-20*	100	20	20	20	60	4,6	6
3PEI-22	110	22	22	22	66	4	8
3PEI-22.2	122	22	28	22.2	61	4	6
3PEI-25	125	25	25	25	75	4	8
3PEI-27	135	27	27	27	81	4	8
3PEI-28	140	28	28	28	84	4	8
3PEI-29	145	29	29	29	72.5	4	8
3PEI-30	150	30	30	30	90	6	7
3PEI-30.5	152	30.5	30.5	30.5	76.25	6	6
3PEI-32	160	32	32	32	80	4	8
3PEI-32*	160	32	32	32	96	4	8
3PEI-35	175	35	35	35	105	4	8
3PEI-36	180	36	36	36	90	6	8
3PEI-38	190	38	38	38	95	4,6	8,10.5
3PEI-38*	190	38	38	38	114	6	8
3PEI-40	200	40	40	40	100	4	10.5
3PEI-40*	200	40	40	40	120	4,6	10
3PEI-44	220	44	44	44	132	6	8,10.5,12.5
3PEI-45	225	45	45	45	135	4	10
3PEI-50	250	50	50	50	150	4,6	8,10.5
3PEI-56	280	56	56	56	168	4	12
3PEI-60	300	60	60	60	180	6	12
3PEI-61	288	61.3	52	61.3	144	4,6	12
3PEI-61	305	61	61	61	152.5	4,6	14
3PEI-70	350	70	70	70	210	6	13
3PEI-80	400	80	80	80	240	6	14
3PEI-90	450	90	90	90	270	6	14
3PEI-100	500	100	100	100	300	6	16

Note:

1. 标有"*"的型号是通过手动冲床制造的
1. Marked "*" model is manufactured by manually punch

EI with GAP

EI Core Lamination



适用范围：照明产品，节能灯，金卤灯用电子变压器 / 整流器

Scope: Lighting Product, Energy saving lamp, Transform and Rectifier of metal halide lamp

Figure A

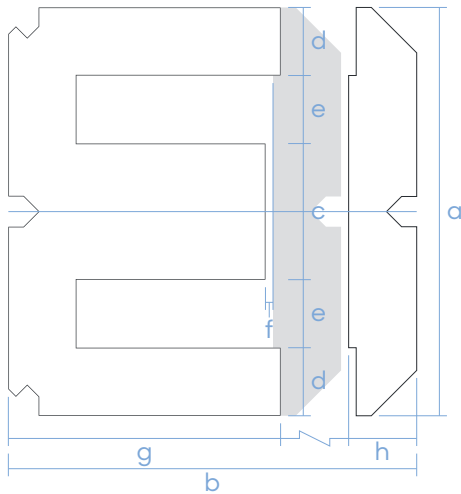


Table A

TYPE	a	b	c	d	e	g	h	i	aperture	f
EI-60F	60.0	51.6	20.0	10.0	10.0	41.6	10.0			0.55,0.7,0.8,0.9,1.03,1.15,1.25,1.37,1.5
EI-75F	75.0	64.1	25.0	12.5	12.5	51.6	12.5			1.2,1.27,1.4,1.5,1.6,1.8,1.95,2.35
EI-96F	96.0	81.6	32.0	16.0	16.0	65.6	16.0			1.55,1.6,1.82,2.1,2.2,2.4,2.75
EI-60H	60.0	50.0	20.0	10.0	10.0	40.0	10.0			0.7,0.8,1.1,1.5
EI-66H	66.0	55.0	22.0	11.0	11.0	44.0	11.0			0.8,1.0,1.2,1.8
EI-67.5H	67.5	62.5	16.5	8.0	17.5	51.6	12.5			1.2,1.5,1.6,2.0
EI-75H	75.0	62.5	25.0	12.5	12.5	50.0	12.5			1.25,1.3,1.4,1.45,1.6,1.95,2.0,2.1,2.35
EI-96H	96.0	80.0	32.0	16.0	16.0	64.0	16.0			1.8,2.0,2.2,3.3



EI 型照明灯具用变压器矽钢片规格表 EI Core Lamination Table

Figure B

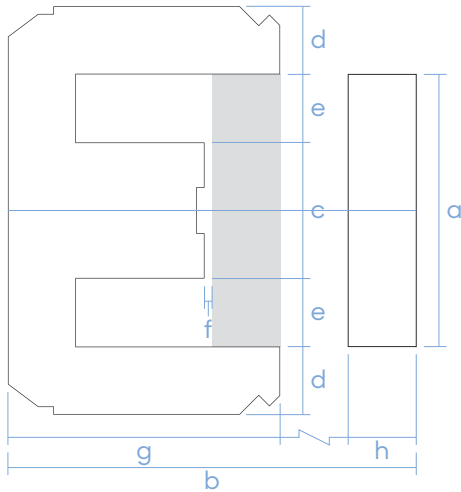


Figure C

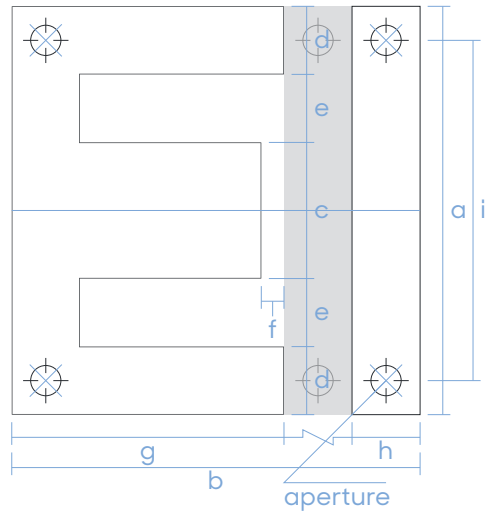


Table B

TYPE	a	b	c	d	e	g	h	i	aperture	f
EI-39C	39.0	27.0	13.18	6.59	6.32		6.38			0.5
EI-41C	41.0	26.0	13.8	6.9	6.7		6.7			0.5
EI-41D	41.0	26.5	13.8	6.9	6.85		6.9			0.5
EI-42C	42.0	28.0	13.8	5.9	7.2		7.2			0.5
EI-66C	44.0	51.0	22.0	11.0	11.0		11.0			0.9
EI-66CC	45.5	51.0	20.5	10.25	12.5		10.4			1.1
EI-60C	60.0	50.0	20.0	10.0	10.0	10.0	10.0			0.7(1.5)
EI-75C	75.0	62.5	25.0	12.5	12.5	50.0	12.5			1.25(1.95)

Table C

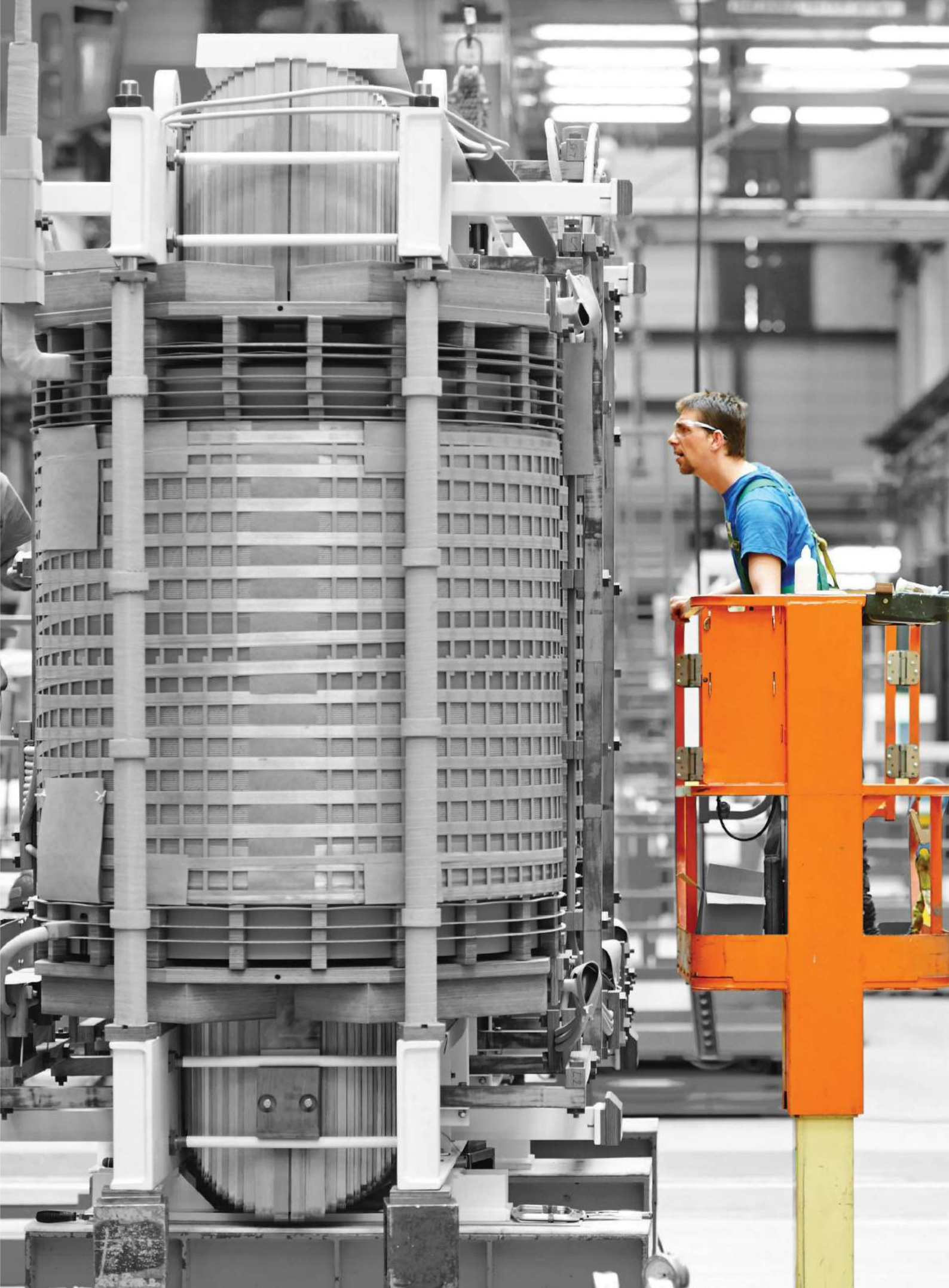
TYPE	a	b	c	d	e	g	h	i	aperture	f
EI-60BH	60.0	50.0	20.0	10.0	10.0	40.0	10.0	50.0	4.0	0.55,0.8,1.2
EI-66BH	66.0	55.0	22.0	11.0	11.0	44.4	11.0	56.0	4.5	0.55,0.8,1.0
EI-75BH	75.0	62.5	25.0	12.5	12.5	50.0	12.5	62.5	5.0	1.3
EI-76.2BH	76.2	63.5	25.4	12.7	12.7	50.8	12.7	64.0	5.0	1.3,1.5,1.8,2.0,2.3
EI-85.8BH	85.8	71.5	28.6	14.3	14.3	57.2	14.3	71.0	5.0	1.3,1.5,1.8,2.0
EI-96BH	96.0	80.0	32.0	16.0	16.0	64.0	16.0	80.0	6.0	2.2,2.75
EI-114BH	114.0	95.0	38.0	19.0	19.0	76.0	19.0	95.0	7.0	2.5
EI-133.2BH	133.2	111.0	44.4	22.2	22.2	88.8	22.2	111.0	7.0	5.5

Reactor Core Lamination



适用范围：适用于各类电抗器用铁芯。
Scope: Iron Core of Electric Reactor





www.centersky.cn



中天电器
CENTERSKY

中国江苏江阴市南闸街道河西路18号 214400
18# Hexi RD. Nanzha Subdistrict,
Jiangyin 214400, Jiangsu, China
Tel:+86 510 8617 8333
Fax:+86 510 8618 6167
info@centersky.com.cn
www.centersky.cn

www.centersky.com.cn

400-8828-337

中天电器全国技术服务热线

